

# JVC



PC AND Macintosh CONNECTION KIT

# Picture Navigator

ENGLISH



**INSTRUCTIONS**

LYT0113-001A

**EN**

<i>MAJOR FEATURES</i>	<i>4</i>
<b>For Windows</b> .....	<b>5</b>
<i>CONNECTIONS</i>	<i>6</i>
<i>GETTING STARTED</i>	<i>7</i>
<i>INSTALLATION</i>	<i>8</i>
<i>HOW THE DESKTOP WORKS</i>	<i>9</i>
Bookshelf .....	9
Album View .....	11
Photo View .....	12
Camera View .....	13
<i>CHANGING SYSTEM SETTINGS</i>	<i>14</i>
<i>TRANSFERRING AN IMAGE FROM CAMCORDER TO PC</i>	<i>17</i>
Saving an image on your hard drive .....	17
Deleting all the still images stored in the camcorder .....	17
<i>OPENING AN IMAGE STORED ON YOUR HARD DRIVE</i>	<i>18</i>
Zooming in an image .....	18
<i>CHANGING THE ALBUM'S FRONT COVER</i>	<i>19</i>
Changing an album name .....	19
<i>COPYING AN IMAGE TO ANOTHER ALBUM</i>	<i>20</i>
Restoring an album .....	20
<i>EDITING AND PROCESSING AN IMAGE USING ANOTHER APPLICATION</i>	<i>21</i>
<i>TRANSFERRING AN IMAGE FROM PC TO CAMCORDER</i>	<i>22</i>
<i>INDEX (For Windows)</i>	<i>23</i>

<b>For Macintosh .....</b>	<b>25</b>
<i>CONNECTIONS</i>	26
<i>GETTING STARTED</i>	27
<i>INSTALLATION</i>	28
<i>HOW THE DESKTOP WORKS</i>	29
<b>BOOKSHELF window .....</b>	29
<b>ALBUM window .....</b>	32
<b>PICTURE window .....</b>	33
<b>CAMERA window .....</b>	33
<i>CHANGING SYSTEM SETTINGS</i>	34
<i>TRANSFERRING AN IMAGE FROM CAMCORDER TO PC</i>	38
<b>Saving an image on your hard drive .....</b>	38
<b>Deleting all the still images stored in the camcorder .....</b>	38
<i>OPENING AN IMAGE STORED ON YOUR HARD DRIVE</i>	39
<b>Zooming in on or out of an image .....</b>	39
<b>Rotating an image .....</b>	39
<i>CHANGING THE ALBUM'S FRONT COVER</i>	40
<b>Changing the comment .....</b>	40
<i>MOVING AN IMAGE TO ANOTHER ALBUM</i>	41
<b>Adding an album created using another application .....</b>	41
<i>EDITING AND PROCESSING AN IMAGE USING ANOTHER APPLICATION</i>	42
<i>TRANSFERRING AN IMAGE FROM PC TO CAMCORDER</i>	43
<i>NOTICE FOR USERS</i>	44
<i>INDEX (For Macintosh)</i>	45

**CAUTION:**

- Operate this equipment according to the operating procedures described in this manual.
- Use only the provided CD-ROM. Never use any other CD-ROM to run this software.
- Do not attempt to modify this software.
- Changes or modifications not approved by JVC could void user's authority to operate the equipment.

## What is Picture Navigator software ?

Picture Navigator software is a type of application program that allows you to transfer still images stored in the camcorder's built-in memory to a personal computer by connecting a camcorder with built-in Digital Still Camera to a PC.

What's more, you can also transfer images stored on your PC's hard drive back to the camcorder.

## Advanced Applications

### Capturing images

You can capture images from a camcorder with built-in Digital Still Camera and can also view them on the PC's monitor.

### Saving an image

You can save an image onto your hard drive or a diskette.

### Editing an image

There are a variety of album and image editing possibilities.

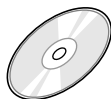
You can move the position of an image within an album, move an image to another album, and zoom and rotate images.

### Transferring a modified image to a camcorder

You can transfer an image that has been modified using the provided \*MGI PhotoSuite SE to a camcorder.

(\*MGI PhotoSuite SE is compatible with Windows® only.)

## Provided Accessories



### CD-ROM including two software programs:

- Picture Navigator
- MGI PhotoSuite SE



### PC Connection Cable (for Windows®)



### PC Connection Cable (for Macintosh)

# For Windows®

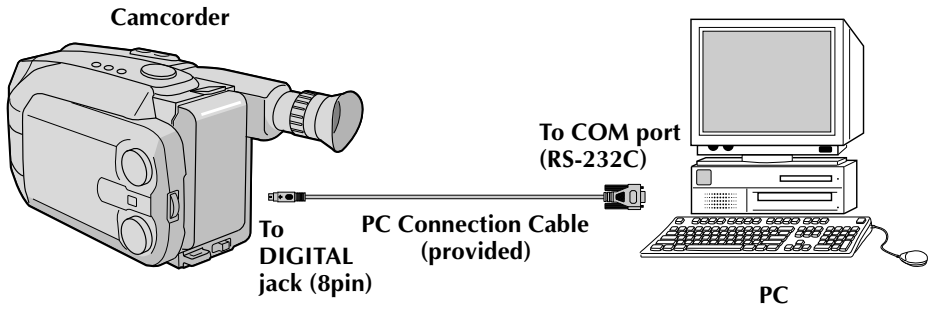
---

---

You can find the latest information (in English)  
on the provided software program at our World  
Wide Web Server.

<http://www.jvc-victor.co.jp/index-e.html>

- Before connection, turn off the power on your PC and camcorder for safety.
- We recommend you should use the AC Power Adapter/Charger.



**Operating Environment**

- Personal Computer with Microsoft® Windows® 95
- CPU 486SX or higher processor (Pentium or better is recommended.)
- Minimum RAM requirement : 16 MB
- Available Hard Disk space of at least 20 MB
- Color display capable of at least 640 x 480 pixels, 256 colors  
Recommended 800 x 600, 32000 colors
- 1 free serial transmission port, compatible with 9600 bps or higher transmission rate, connectable to RS-232C with 9 pin serial connector (Recommended compatible with UART 16550A)
- Mouse (Windows® compatible)
- CD-ROM drive

**Note:** An optional 9 pin serial conversion adapter is required for computers using a serial communication port other than a standard 9 pin.

- \* Microsoft® and Windows® are either registered trademarks or trademarks of Microsoft Corporation in the United States and/or other countries.
- \* Other product and company names included in this instruction manual are trademarks and/or registered trademarks of their respective holders.
- \* MGI PhotoSuite SE is a trademark of MGI Software Corp.

**Connectable Devices**

- JVC camcorder GR-AXM700U, GR-AXM900U

(As of January 1998)

## **INSTALLATION (Picture Navigator)**

---

Refer to the Windows® 95 manual or your computer's manual for details on basic Windows® 95 operating procedures.

- 1.** Start up Windows® 95.
  - Close any other applications that are running.  
Make sure that there are no icons of other applications on the task bar.
- 2.** Insert the CD-ROM into the CD-ROM drive.
- 3.** Double-click the "**MY COMPUTER**" icon.
- 4.** Double-click the "**CD-ROM**" icon.
- 5.** Double-click the "**JVC**" folder.
- 6.** Double-click the "**PNAVI-EN**" folder.
- 7.** Double-click the "**setup.exe**" icon.
  - The set-up program will load. Follow the instructions that appear on the screen.

## **STARTING UP PICTURE NAVIGATOR**

---

- 1.** Start up Windows® 95.
- 2.** Click the Start button on the task bar.
  - The Program menu appears on the screen.
- 3.** Move the mouse pointer over the program entry you want to run and click to start the program.
  - The "**Picture Navigator**" starts up.

## **HOW TO CLOSE THE PROGRAM**

---

Click the Close button. Or click "**Exit**" from "**File**" in the menu bar.

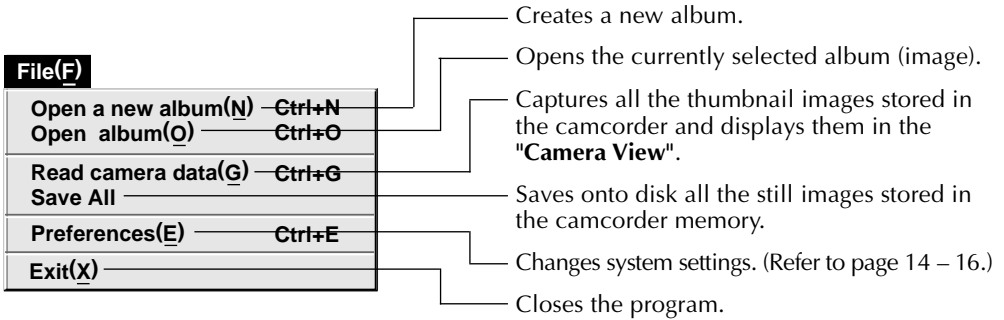


## MENU BAR

All program functions can be selected from the menus in the menu bar. Click on any item in the menu bar to open the corresponding pulldown menu. Then click on the desired command in the pulldown menu. Some menu entries are invalid depending on the program status. Invalid commands appear lighter than valid commands.

### Bookshelf

Front cover images of all the albums are shown.



**Edit(E)**

Restore an album to the bookshelf(A) — **Ctrl+A**  
 Delete the album(T) — **Ctrl+X**

Restores a deleted album.  
 (see page 20)

Deletes the selected album from the  
 "Bookshelf".

**Display(V)**

✓ **Toolbar(T)**  
 ✓ **Status bar(S)**

Displays the toolbar.

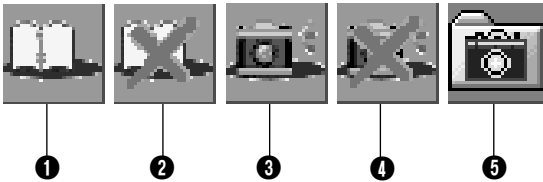
Displays the status bar.

**Help(H)**

**Version (A)...**

Displays information about the software version.

### ■ Bookshelf toolbar



- ❶ Creates a new album.
- ❷ Deletes the selected album.
- ❸ Captures all the thumbnail images stored in the camcorder and displays them in the "Camera View".
- ❹ Deletes all the still images stored in the camcorder.
- ❺ Saves onto disk all the still images stored in the camcorder memory.

## Album View

The thumbnails are displayed on the screen.

### File(F)

Open(O)... <b>Ctrl+O</b>	Opens the currently selected photo.
Close album(X)	Closes the "Album View".

### Edit(E)

Edit(E)	Loads another application and opens the selected image.
Delete(T) <b>Ctrl+X</b>	Deletes the selected photo.

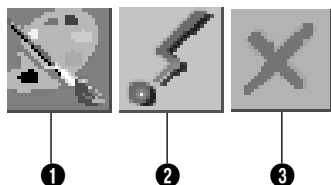
### Display(V)

✓ Toolbar(T)	Displays the toolbar.
--------------	-----------------------

### Sort(S)

✓ Non	Images are displayed in captured order.
Date up	Displays images in chronological order.
Date down	Displays images in reverse chronological order.
Name up	Displays images alphabetically (A~).
Name down	Displays images in reverse alphabetical order (Z~).

### ■ Album View toolbar

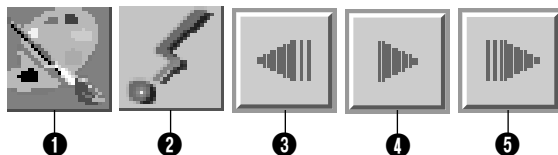


- ❶ Loads another application and opens the selected image.
- ❷ Transfers the selected image from PC to the camcorder.
- ❸ Deletes the selected image.

## Photo View

The selected image is displayed in full size.

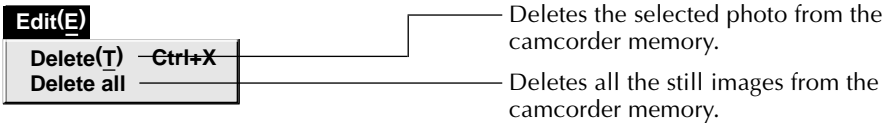
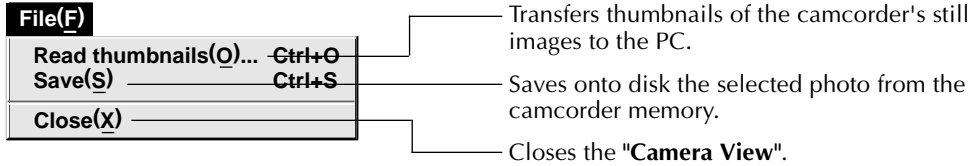
■ Photo View toolbar



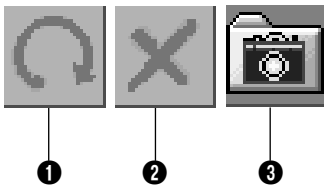
- ❶ Loads another application and opens the displayed image.
- ❷ Transfers the selected image from PC to the camcorder.
- ❸ Displays the album's previous photo.
- ❹ Plays the slide show.
- ❺ Displays the album's next photo.

## Camera View

This window displays thumbnails of the camcorder's still images.



### ■ Camera View toolbar



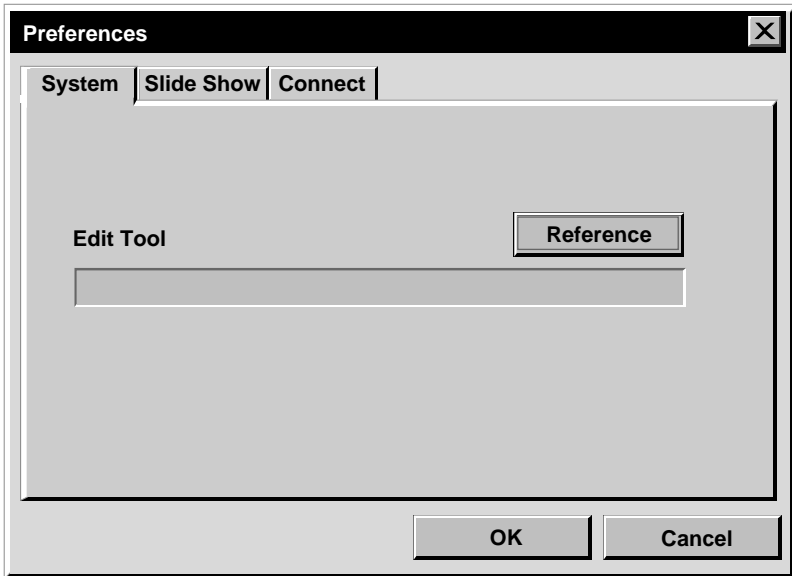
- 1** Transfers thumbnails of the camcorder's still images to the PC.
- 2** Deletes the selected photo from the camcorder memory.
- 3** Saves onto disk the selected photo from the camcorder memory.

Set the program preferences such as image display and serial port speed. The menu display may change depending on your PC.

## **System**

---

The following screen appears when you select "**File**"—"Preferences"—"**System**" in the "**Bookshelf**".



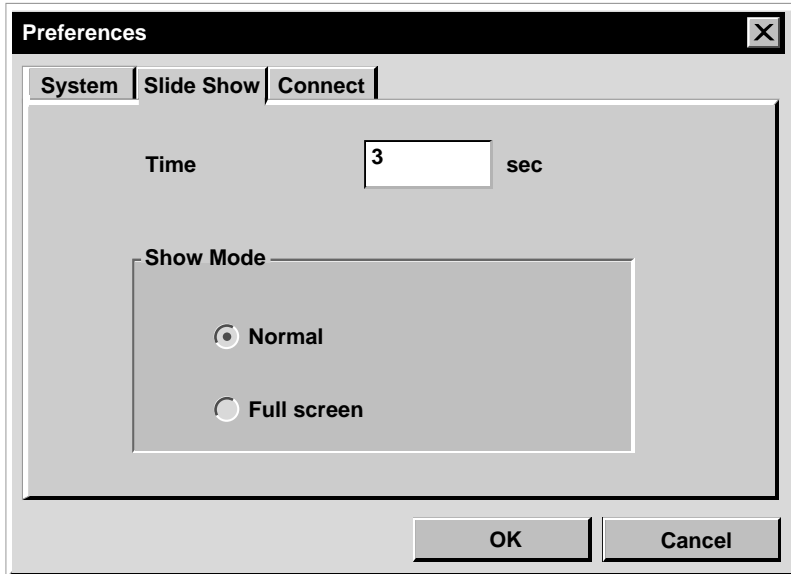
### **Edit Tool**

Select the image processing software, such as the provided MGI PhotoSuite SE or another commercial paint application, to be used when processing the captured image.

## Slide Show

The following screen appears when you select "File"—"Preferences"—"Slide Show" in the "Bookshelf".

Click the "OK" button after changing the settings.



### Time

Set the display time of the images for the Slide Show.

### Show Mode

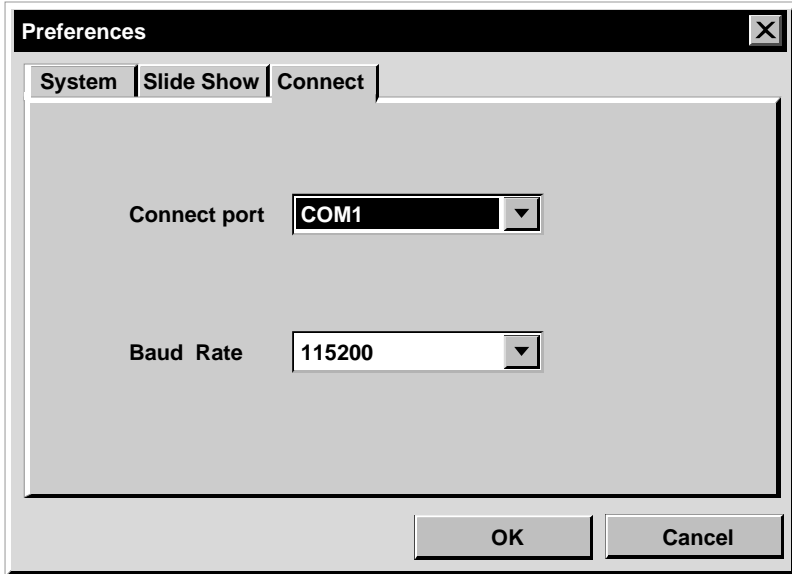
**Normal** : Images are displayed one after the other in the center of the screen.

**Full screen** : One full-sized image after another is displayed on the screen.

## Connect

The following screen appears when you select "File"—"Preferences"—"Connect" in the "Bookshelf".

Click the "OK" button after changing the settings.



### Connect port

Select the COM port connecting the PC to the camcorder.

### Baud Rate

The maximum speed is set up automatically depending on the PC you use. Depending on your PC, certain serial speeds may not be selectable. If transmission errors occur during use, change to a lower serial speed setting. In this case, the rate of image transfer will be slower.

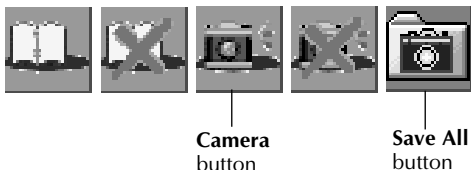


## Camcorder preparation

- 1 Set the System Select Switch to "D.S.C.". Set the Power Switch to Play.

## PC operation

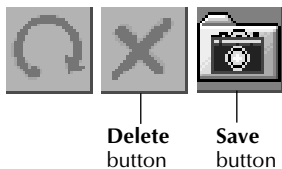
- 2 Select "**File**"—"Read camera data", or click the "**Camera**" button in the "**Bookshelf**".
  - All the thumbnail images in the camcorder are transferred to PC.
  - When the transfer is complete, thumbnail images captured into the "**Camera View**" will be displayed.
  - These images are not saved onto the PC's hard drive at this time.
  - Transferring images to a PC does not erase the images stored in the camcorder.



## SAVING AN IMAGE ON YOUR HARD DRIVE

Click the "**Save All**" button in the "**Bookshelf**". This creates a new album folder and saves all the images on your hard drive.

- When you want to save only a certain image:
1. Click on the image you want to save in the "**Camera View**" to highlight its lower left corner.
  2. Select "**File**"—"Save" in the "**Camera View**". You can also click the "**Save**" button in the "**Camera View**".
  3. Select the album in the "**Select Stored Album**" window.



## DELETING ALL THE STILL IMAGES STORED IN THE CAMCORDER

Select "**Edit**"—"Delete all" in the "**Camera View**".

- When you want to delete only a certain image:
1. Click on the image you want to delete in the "**Camera View**" to highlight its lower left corner.
  2. Select "**Edit**"—"Delete" in the "**Camera View**". You can also click the "**Delete**" button in the "**Camera View**".

## WHEN YOU WANT TO DELETE AN ALBUM FROM YOUR HARD DRIVE

1. Move the mouse pointer to the album you want to delete in the "**Bookshelf**", then click the right mouse button to select "**Delete the album with directory**".
2. Click "**OK**" in the "**Warning**" dialog box.

### CAUTION

- Beware that the image stored in the camcorder will also be deleted when you delete an image from the "**Camera View**".
- Protected images in the camcorder cannot be deleted.
- Transfer is unavailable while the camcorder is displaying a thumbnail image screen or a menu screen. You can only transfer images being displayed by the camcorder at full size.

# 18<sub>EN</sub> OPENING AN IMAGE STORED ON YOUR HARD DRIVE

You can open an image that has been transferred from a camcorder and stored on your hard drive.



- 1** Double-click the album you want to view in the **"Bookshelf"**.
  - The thumbnails are displayed on the screen.
- 2** Double-click the image which you want to view in full size.
  - The selected image is displayed in full size.
  - Click the ► button in the **"Photo View"** to run through images in succession automatically (Slide Show). Click the left mouse button to stop the slide show.
  - Refer to page 15 to change the display time of the images.
  - Click the ► button in the **"Photo View"** to display the next full image.
  - Click the ◀ button in the **"Photo View"** to display the previous full image.

## ZOOMING IN AN IMAGE

When the right mouse button is clicked on an image in the **"Photo View"**, the view size menu appears. Select the desired size.

The factory setting is 100%. The **"Window Size"** setting automatically displays the image at a size that fits the window.

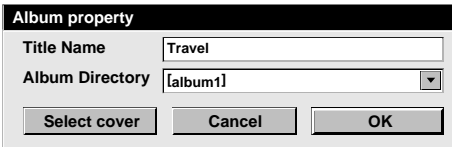
**Note:** An image that has been zoomed-in can not be saved.

Each album's front cover in the **"Bookshelf"** is the first thumbnail image of the **"Album View"**. When you want to change an album's front cover, do the following.



- 1 Move the mouse pointer to the album whose front cover you want to change in the **"Bookshelf"**, then click the right mouse button.
- 2 Click **"Album property"**. The **"Album property"** dialog box appears.
- 3 Click **"Select cover"**. The **"Select cover"** dialog box appears.
- 4 Select the file name for the front cover you want from the **"cover image"** list and click **"OK"**.
- 5 Click **"OK"** in the **"Album property"** dialog box. The album front cover in the **"Bookshelf"** is changed to the new front cover.

## CHANGING AN ALBUM NAME



- 1 Move the mouse pointer to the album whose name you want to change in the **"Bookshelf"**, then click the right mouse button.
- 2 Click **"Album property"**. The **"Album property"** dialog box appears.
- 3 Enter an album name in **"Title Name"** and click **"OK"**. The album name is changed to the new one.
  - The characters below cannot be used in a file name.  
\\, /, :, \*, ?, ", <, >, |, space.

You can copy an image among albums by displaying 2 or more albums.

**1** First, open the "**Album View**" for the album you want to copy an image from, and then open another "**Album View**" for the album that you want to copy the image to.

- The two windows are displayed in cascade style.
- Move each window to a position that allows easy viewing, dragging and dropping.

**2** Drag the image you want to copy and drop it into the album where you want to copy it.

**NOTE**

When a file is copied to an album that has a file with the same name but a different image, "**Overwrite?**" is displayed. Pressing "**Yes**" overwrites the image, but the overwritten image will not be displayed in the "**Album View**". First close the "**Album View**", then open it again. The overwritten image is now displayed.

**RESTORING AN ALBUM**

You can restore an album that was previously deleted if its album directory was not removed.

**Edit(E)**

Restore an album to the bookshelf(A)	Ctrl+A
Delete the album(T)	Ctrl+X

**1** Select "**Edit**"—"Restore an album to the bookshelf" in the "**Bookshelf**".

- The "**Album property**" dialog box appears.

**2** Select the album you want to restore from the "**Album Directory**" list and click "**OK**".

- The album is added to the "**Bookshelf**".

You can select the image editor of your choice as the Picture Navigator's editor.

<b>File(F)</b>	
Open a new album(N)	Ctrl+N
Open album(O)	Ctrl+O
Read camera data(G)	Ctrl+G
Save All	
<b>Preferences(E)</b>	<b>Ctrl+E</b>
<b>Exit(X)</b>	

<b>Edit(E)</b>	
<b>Edit(E)</b>	
Delete(T)	Ctrl+X



Edit button

## Preparation

- 1 Select "**File**"—"**Preferences**" in the "**Bookshelf**".  
The "**System**" window appears.
- 2 Click on the "**Browse**" button.
- 3 Locate and select "**MGI PhotoSuite SE**".  
The software name is displayed in the Edit Tool row.
- 4 Click on the "**OK**" button.

## Operation

- 5 Select the image you want to edit in the "**Album View**".  
Click on the image you want to edit in the "**Album View**" to highlight its lower left corner.  
To select 2 or more images, move the mouse pointer to each image and click while pressing the Ctrl key.
- 6 Open the application. Select "**Edit**"—"**Edit**" or click on the "**Edit**" button in the "**Album View**".

*"MGI PhotoSuite SE" selected in step 3 opens and the selected image is displayed in full size. If you have selected more than 2 images, all the images will be displayed in full size. Refer to the MGI PhotoSuite Idea Guide provided in the CD-ROM for the operating procedures.*

## Camcorder's preparation

- 1 Set the System Select Switch to "D.S.C.". Set the Power Switch to PLAY.

## PC's preparation

- 2 Click on the image you want to transfer in the "Album View" to highlight its lower left corner.  
To select 2 or more images, move the mouse pointer to each image and click while pressing the Ctrl key. Select all the images if you wish to transfer all the images to the camcorder.
- 3 Click on the "Transfer" button in the "Album View". The selected image is transferred to the camcorder.




Transfer button



### NOTES

- Image sizes of 640 x 480 pixels and 320 x 240 pixels can be sent from a PC to the camcorder. However, images that take up more than approx. 200 KB cannot be transferred.
- Image transfer is also unavailable if the camcorder memory becomes full and "Failure" is displayed while transferring images to it.






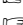



## A

- Advanced applications .....  pg. 4
- Album View .....  pg. 11

## B

- Baud rate .....  pg. 16
- Bookshelf .....  pg. 9



## C

- Camera View .....  pg. 13
- Changing an album name .....  pg. 19
- Changing system settings .....  pg. 14
- Changing the album's front cover ...  pg. 19
- Connectable devices .....  pg. 7
- Connections .....  pg. 6
- Connect port .....  pg. 16
- Connect preferences .....  pg. 16
- Copying an image to another album .....  pg. 20


## D

- Deleting all the still images stored in the camcorder .....  pg. 17



## E

- Editing and processing an image using another application .....  pg. 21
- Edit Tool .....  pg. 14


## G

- Getting started .....  pg. 7



## H

- How the desktop works .....  pg. 9
- How to close the program .....  pg. 8



## I

- Installation .....  pg. 8



## M

- Major features .....  pg. 4
- Menu bar .....  pg. 9


## O

- Opening an image stored on your hard drive .....  pg. 18
- Operating environment .....  pg. 7




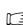

## P

- Photo View .....  pg. 12
- Provided accessories .....  pg. 4





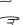


## R

- Restoring an album .....  pg. 20



## S

- Saving an image on your hard drive .....  pg. 17
- Show mode .....  pg. 15
- Slide show preferences .....  pg. 15
- Starting up Picture Navigator .....  pg. 8
- System preferences .....  pg. 14


## T

- Time .....  pg. 15
- Toolbar
  - Album View toolbar .....  pg. 11
  - Bookshelf toolbar .....  pg. 10
  - Camera View toolbar .....  pg. 13
  - Photo View toolbar .....  pg. 12
- Transferring an image from camcorder to PC .....  pg. 17
- Transferring an image from PC to camcorder .....  pg. 22

## W

- What is Picture Navigator software ..  pg. 4
- World Wide Web Server .....  pg. 5

## Z

- Zooming in an image .....  pg. 18



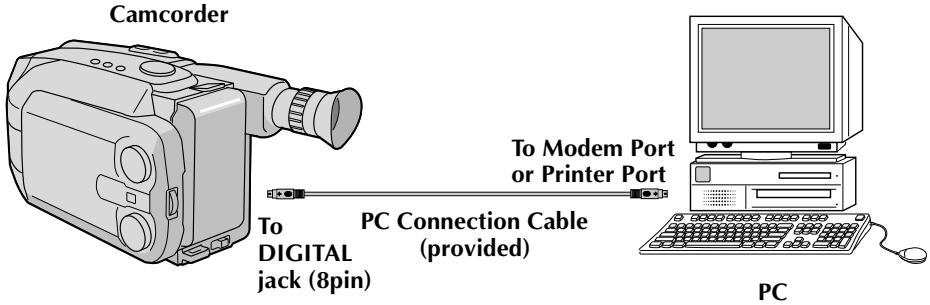


# For Macintosh®

---

You can find the latest information (in English)  
on the provided software program at our World  
Wide Web Server.  
<http://www.jvc-victor.co.jp/index-e.html>

- Before connection, turn off the power on your PC and camcorder for safety.
- We recommend you should use the AC Power Adapter/Charger.



**Operating Environment**

- An Apple Macintosh computer with a 68040 processor or faster/PowerPC 601 or faster
- OS: Apple system software version 7.5 or higher
- RAM requirement: at least 4 MB
- Available Hard Disk space of at least 2 MB
- Color display capable of at least 640 x 480 pixels, 256 colors  
Recommended 800 x 600, 32000 colors
- RS-422 (Modem or printer) port
- CD-ROM drive

\* Apple and Macintosh are trademarks of Apple Computer Inc., registered in the U.S.A. and other countries.

\* Other product and company names included in this instruction manual are trademarks and/or registered trademarks of their respective holders.

**Connectable Devices**

- JVC camcorder GR-AXM700U, GR-AXM900U

(As of January 1998)

## **INSTALLATION (Picture Navigator)**

---

Refer to the Macintosh instruction manual for basic Macintosh operation.

- 1.** Start up your Macintosh.
  - Close any other applications that are running.
- 2.** Insert the CD-ROM into the CD-ROM drive.
- 3.** Double-click the "CD-ROM" icon.
- 4.** Drag and drop the "Picture Navigator" folder to copy it onto your hard drive.
  - Copy it to any place other than the system folder.

## **STARTING UP PICTURE NAVIGATOR**

---

- 1.** Start up your Macintosh.
- 2.** Open the "Picture Navigator" folder and double-click the "Picture Navigator" icon.
  - "Picture Navigator" starts up.

## **HOW TO CLOSE THE PROGRAM**

---

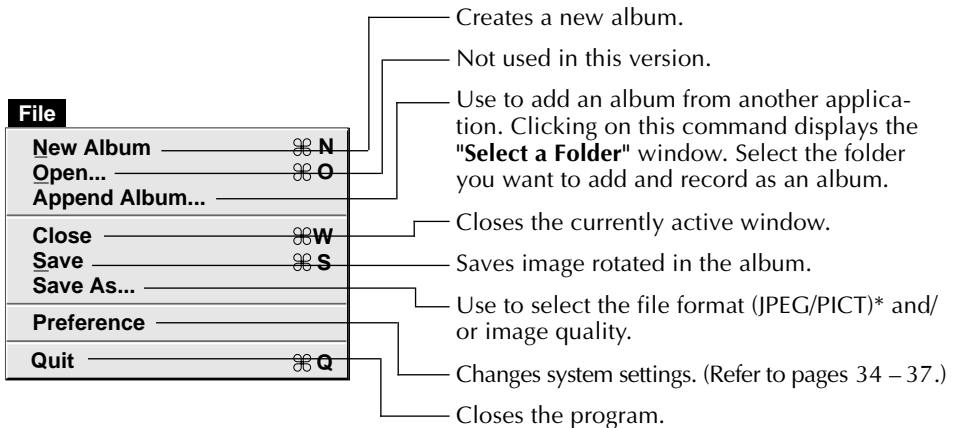
Click the Close button. Or click "Quit" from "File" in the menu bar.

## MENU BAR

All program functions can be selected from the menus in the menu bar. Click and hold the mouse button on any item in the menu bar to open the corresponding pulldown menu. Then release the button on the desired command in the pulldown menu. Some menu entries are invalid depending on the program status. Invalid commands appear lighter than valid commands.

### BOOKSHELF window

Front cover images of all the albums are shown.



#### \* What is JPEG ?

- This is the default setting. If you do not set Picture Format, image data is captured in this format.
- JPEG (Joint Photographic Expert Group) is a leading standard defining the compression and decompression of still color pictures.
- The transfer data size is reduced because the images are compressed. This results in a shorter transfer time.

#### \* What is PICT ?

This is an image format widely used on the Macintosh. Most Macintosh image-editing applications support this format.

**Edit**

Undo	⌘Z
Cut	⌘X
Copy	⌘C
Paste	⌘V
Clear	
Select All	⌘A
Open by Other Application	
Use for Album Cover	
Remove Album Cover	

Undoes the most recent selection.

Cuts the selected comment for the thumbnail image and moves it to the clipboard.

Copies the selected comment for the thumbnail image to the clipboard.

Pastes the comment for the thumbnail image from the clipboard.

Clears the selection.

Selects all the albums in the "**BOOKSHELF window**" or all the images in the "**ALBUM window**".

Loads another application and opens the selected image.

Select it to change the album's front cover in the "**BOOKSHELF window**".

Use to change an album's front cover from an image to a generic illustration.

**View**

Name	
Recorded Date	
Edited Date	
Comment	
None	
Sort by Name	
Sort by Recorded Date	
Sort by Edited Date	
Sort by Comment	
Rotate 90° Clockwise	
Rotate 90° Counterclockwise	
Rotate 180°	

Displays the file name for each image in an album.

Displays the date when the image was recorded.

Displays the date when the image was added or edited.

Displays the comment for each image in an album.

Does not display any information (Name/Recorded Date/Edited Date/Comment) for each thumbnail image.

Sorts by the file name of each image in an album.

Sorts by the date when each image was recorded.

Sorts by the date when each image was added or edited.

Sorts by the comment for each image in an album.

Rotates the image 90 degrees clockwise.

Rotates the image 90 degrees counterclockwise.

Rotates the image 180 degrees.

**Camera**

Reload	
Stop	
Save All	⌘R
Save Selected Photo	
Transmit Selected Photo	⌘T
Delete All...	
Delete Selected Photo...	

Transfers thumbnails of the camcorder's still images.

Stops image transfer from the camcorder.

Saves onto disk all the still images stored in the camcorder memory.

Saves onto disk the selected photo from the camcorder memory.

Transfers the selected image from the PC to the camcorder.

Deletes all the still images from the camcorder memory.

Deletes the selected photo from the camcorder memory.

**Slide Show**

Play • Pause	⌘/
Play(Selected Photo)	
Stop	⌘.
Next Photo	
Previous Photo	
More Interval	⌘[
Less Interval	⌘]

Plays/Pauses the Slide Show.

Selected photos are displayed in the form of a "Slide Show".

Stops the Slide Show.

Displays the album's next photo.

Displays the album's previous photo.

Makes the display time of the images longer for the Slide Show.

Makes the display time of the images shorter for the Slide Show.

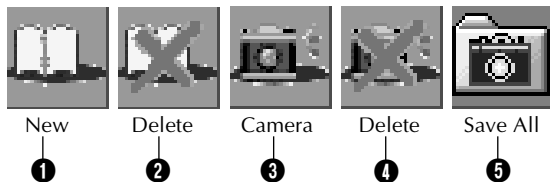
**Window**

Bookshelf	⌘0
Camera	

Opens the "BOOKSHELF window".

Opens the "CAMERA window".

### ■ BOOKSHELF window toolbar

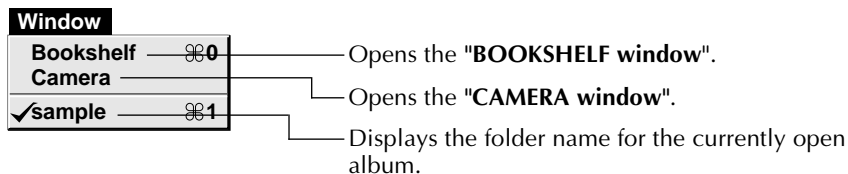


- 1 Creates a new album.
- 2 Deletes the selected album.
- 3 Captures all the thumbnail images stored in the camcorder and displays them in the "CAMERA window".
- 4 Deletes all the still images stored in the camcorder.
- 5 Saves onto disk all the still images stored in the camcorder memory.

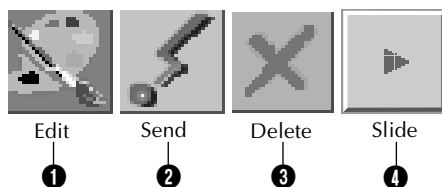
## ALBUM window

The image list is displayed on the screen.

The menus are the same as those shown in the BOOKSHELF window, except for the Window menu.



### ■ ALBUM window toolbar



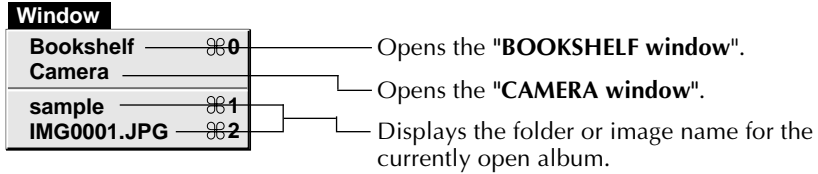
- 1 Loads another application and opens the selected image.  
The icon of the registered software is displayed in the "File"—"Preference"—"Edit" screen (☞ pg. 37).
- 2 Transfers the selected image from PC to the camcorder.
- 3 Deletes the selected image.
- 4 Plays/Pauses the slide show.



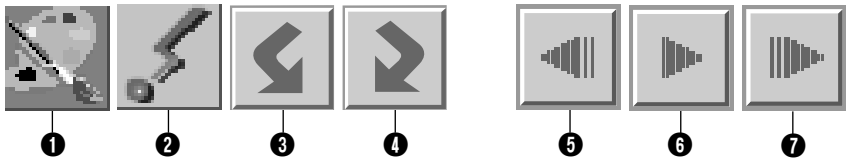
## PICTURE window

The selected image is displayed in full size.

The menus are the same as those shown in the BOOKSHELF window, except for the Window menu.



### PICTURE window toolbar



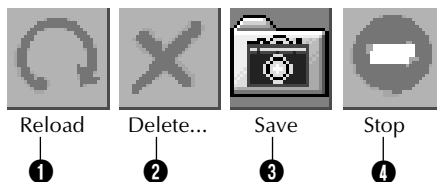
- ❶ Loads another application and opens the displayed image.  
The icon of the registered software is displayed in the "File"—"Preference"—"Edit" screen (☞ pg. 39).
- ❷ Transfers the selected image from PC to the camcorder.
- ❸ Rotates the image 90 degrees clockwise.
- ❹ Rotates the image 90 degrees counterclockwise.
- ❺ Displays the album's previous photo.
- ❻ Plays/Pauses the slide show.
- ❼ Displays the album's next photo.

## CAMERA window

This window displays thumbnails of the camcorder's still images.

The menus are the same as those shown in the BOOKSHELF window.

### CAMERA window toolbar



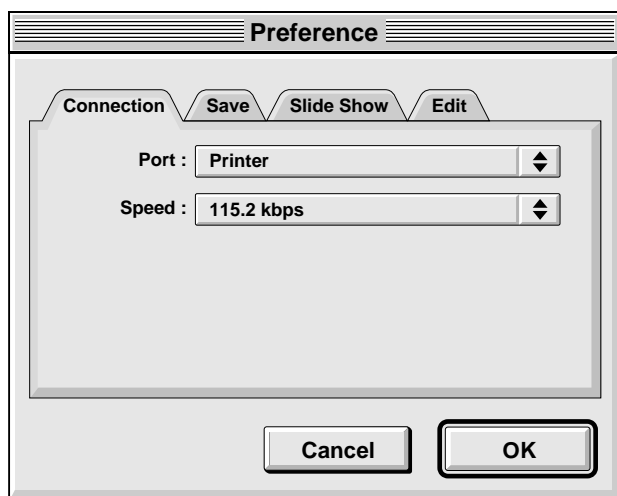
- ❶ Transfers thumbnails of the camcorder's still images to the PC.
- ❷ Deletes the selected photo from the camcorder memory.
- ❸ Saves onto disk the selected photo from the camcorder memory.
- ❹ Stops image transfer from the camcorder.

Set the program preferences such as connection, serial port speed and image display.

The menu display may change depending on your PC.

### **Connection**

The following screen appears when you select "File"—"Preference"—"Connection". Click the "OK" button after changing the settings.



### **Port**

Modem: select it when connecting to the modem port.

Printer: select it when connecting to the printer port.

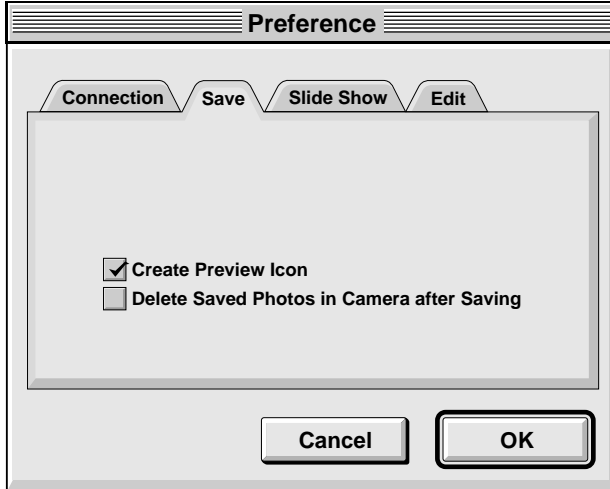
### **Speed**

The maximum speed is set automatically depending on the PC you use.

Depending on your PC, certain serial speeds may not be selectable. If transmission errors occur during use, change to a lower serial speed setting. In this case, the rate of image transfer will be slower.

## Save

The following screen appears when you select **"File"—"Preference"—"Save"**. Click the **"OK"** button after changing the settings.



### Create Preview Icon

Clicking on the **"check box"** will cause an icon of the captured image to be created and displayed along with its file name.

### Delete Saved Photos in Camera after Saving

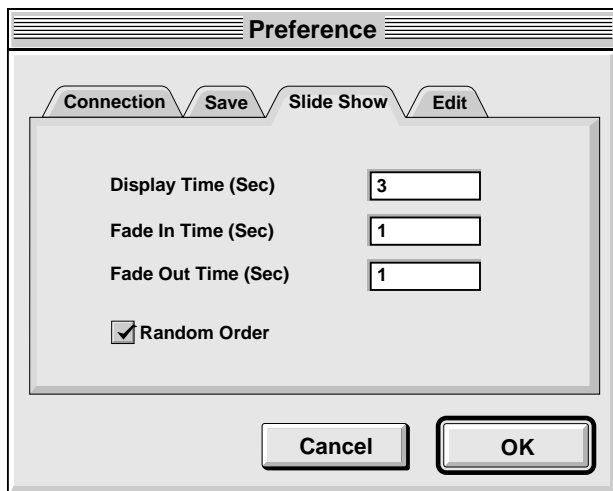
Clicking on the **"check box"** will cause the still image stored in the camcorder to be automatically deleted after being saved to a PC.

That way there will be no need to delete the still image stored in the camcorder every time it is transferred to the PC.

## Slide Show

The following screen appears when you select "File"—"Preference"—"Slide Show".

Click the "OK" button after changing the settings.



### Display Time (Sec)

Set the display time of the images for the Slide Show.

### Fade In Time (Sec)/Fade Out Time (Sec)

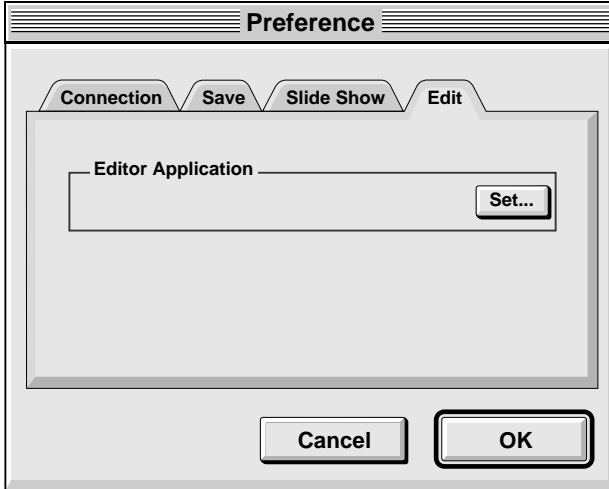
Set Fade In/Out Time of the images for the Slide Show.

### Random Order

Clicking "**check box**" displays images in random order automatically during the Slide Show.

## Edit

The following screen appears when you select "File"—"Preference"—"Edit".



### Editor Application

Select the image processing software, such as another commercial paint application, to be used when processing the captured image.

## Camcorder preparation

- 1 Set the System Select Switch to "D.S.C.". Set the Power Switch to Play.

## PC operation

- 2 Select "**Window**"—"Camera", or click the "**Camera**" button in the "**BOOKSHELF window**".

- All the thumbnail images in the camcorder are transferred to PC.
- When the transfer is complete, thumbnail images captured into the "**CAMERA window**" will be displayed.
- These images are not saved onto the PC's hard drive at this time.
- Transferring images to a PC does not erase the images stored in the camcorder.

- 3 Click the image which you want to view in full size.

- The selected image is displayed in full size.
- These images are not saved onto the PC's hard drive at this time.

## SAVING AN IMAGE ON YOUR HARD DRIVE

Select "**Camera**"—"Save All".

This creates a new album folder and saves all the images on your hard drive.

- When you want to save only a certain image:
  1. Click the upper left corner of the image that you want to save (the cursor changes to a check mark ✓). A red circle will appear in the upper left corner. Clicking it again erases the red circle.
  2. Select "**Camera**"—"Save Selected Photo". You can also click the "**Save**" button in the "**CAMERA window**".

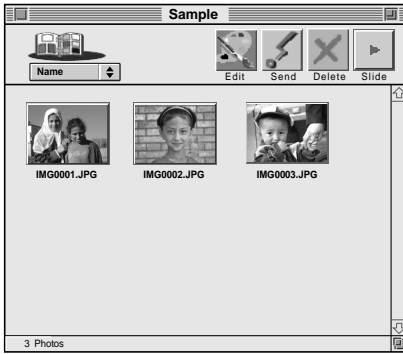
## DELETING ALL THE STILL IMAGES STORED IN THE CAMCORDER

Select "**Camera**"—"Delete All".

- When you want to delete only a certain image:
  1. Click the upper left corner of the image that you want to delete (the cursor changes to a check mark ✓). A red circle will appear in the upper left corner. Clicking it again erases the red circle.
  2. Select "**Camera**"—"Delete Selected Photo". You can also click the "**Delete**" button in the "**CAMERA window**".

### CAUTION


- Beware that the image stored in the camcorder will also be deleted when you delete an image from the "**CAMERA window**".
- Transfer is unavailable while the camcorder is displaying an index image screen or a menu screen. You can only transfer images being displayed by the camcorder at full size.
- Protected images in the camcorder cannot be deleted.



You can open an image that has been transferred from a camcorder and stored on your hard drive.

- 1 Click the album.
- 2 Click the image which you want to view in full size.
  - The selected image is displayed in full size.
  - Click the ► button in the "**PICTURE window**" to run through images in succession automatically (Slide Show). Pressing the ◀ button during a slide show displays images in reverse order. Click the ► button again to stop.
  - Refer to page 36 to change the display time of the images.
  - Click the ► button in the "**PICTURE window**" to display the next full image.
  - Click the ◀ button in the "**PICTURE window**" to display the previous full image. If the ► button is pressed after this, images are shown as a slide show in reverse order.

## ZOOMING IN OR OUT OF AN IMAGE

Click the  button in the bottom left corner of the "**PICTURE window**" to select your desired magnification.

The percentage of magnification is always displayed in the bottom left corner of the "**PICTURE window**".

The factory setting is "**Fit to Window**", which will automatically display the image at a size that fits the window.

**Note:** An image that has been zoomed-in or -out can not be saved.

## ROTATING AN IMAGE

Select "**View**" in the "**PICTURE window**" —"**Rotate 90° Clockwise**", "**Rotate 90° Counterclockwise**" or "**Rotate 180°**".

**"Rotate 90° Clockwise"** : Rotates an image 90 degrees in the clockwise direction every time you select it.

**"Rotate 90° Counterclockwise"** : Rotates an image 90 degrees in the counterclockwise direction every time you select it.

**"Rotate 180°"** : Rotates an image 180 degrees.

**Note:** You can save the rotated image.

■ To exit

Select "**File**"—"Quit".

Each album's front cover in the "**BOOK-SHELF window**" is the first image of the "**ALBUM window**". When you want to change an album's front cover, do the following.

<b>Edit</b>	
Can't Undo	⌘Z
Cut	⌘X
Copy	⌘C
Paste	⌘V
Clear	
Select All	⌘A
Open by Other Application	
<b>Use for Album Cover</b>	
Remove Album Cover	

**1** When you click on the upper left corner (the cursor changes to the check mark ✓) of the image that you want to use as the front cover in the "**ALBUM window**", a red circle will appear in the upper left corner of the image.

**2** Select "**Edit**"—"Use for Album Cover".

- The album front cover in the "**BOOK-SHELF window**" is changed to the new front cover.
- To change an album's front cover from an image to a generic illustration, select "**Edit**"—"Remove Album Cover".

## CHANGING THE COMMENT

<b>View</b>	
Name	
Recorded Date	
Edited Date	
<b>Comment</b>	
None	
Sort by Name	
Sort by Recorded Date	
Sort by Edited Date	
Sort by Comment	
Rotate 90° Clockwise	
Rotate 90° Counterclockwise	
Rotate 180°	

You can change the comment for the image.

**1** Select "**View**"—"Comment" in the "**ALBUM window**".

- The comment will be displayed under the image.

**2** Click the image comment display in the "**ALBUM window**".

- The comment display is highlighted.

**3** Input the comment, and hit the **RETURN** key.

- The comment is changed to the new one.



You can move an image among albums by displaying 2 or more albums.

**1** First, open the "**ALBUM window**" for the album you want to move an image from, and then open another "**ALBUM window**" for the album that you want to move the image to.

- The two windows are displayed in cascade style.
- Move each window to a position that allows easy viewing, dragging and dropping.

**2** Drag the image you want to move and drop it into the album where you want to insert it.

- To change the order of images, drag the image you want to move and drop it at the desired position.

When copying an image to another album, drag and drop while pressing the option button in step 2.

## ADDING AN ALBUM CREATED USING ANOTHER APPLICATION

You can add an album that has already been created using another application to the Picture Navigator software.

File	
New Album	⌘N
Open...	⌘O
<b>Append Album...</b>	
Close	⌘W
Save	⌘S
Save As...	
Preference	
Quit	⌘Q

**1** Select "**File**" —"**Append Album...**" in the BOOKSHELF window.

- The "**Select a Folder**" window opens.

**2** Select the folder you want to add the album to before pressing the Select button.

- The album is added to the BOOK-SHELF window.

You can select the image editor of your choice as the Picture Navigator's editor.

File	
New Album	⌘N
Open...	⌘O
Append Album...	
Close	⌘W
Save	⌘S
Save As...	
Preference	
Quit	⌘Q

Edit	
Can't Undo	⌘Z
Cut	⌘X
Copy	⌘C
Paste	⌘V
Clear	
Select All	⌘A
Open by Other Application	
Use for Album Cover	
Remove Album Cover	

## Preparation

- 1 Select "**File**"—"Preference"—"**Edit**". The "Edit" window in the "**Preference**" appears.
- 2 Click on the "**Set**" button.
- 3 Select the application software. The software name is displayed in the Editor Application column.
- 4 Click on the "**OK**" button.

## Operation

- 5 Select the image you want to edit. When you click on the upper left corner of the image that you want to edit (the cursor changes to a check mark ✓) in the "**ALBUM window**", a red circle will appear in the upper left corner. Clicking it again erases the red circle. You can select 2 or more images this way.
- 6 Open the application. Select the "**Edit**"—"Open by Other Application" or click on the "**Edit**" icon in the "**ALBUM window**".

The application software selected in step 3 opens and the selected image is displayed in full size.

If you have selected more than 2 images, all the images will be displayed in full size. Refer to the instruction manual of the application software for the editing procedures.

**Note:** The processed image is saved in the "**ALBUM window**".

Not all software can display multiple images.

## Camcorder's preparation

- 1 Set the System Select Switch to "D.S.C.". Set the Power Switch to PLAY.

## PC's preparation

- 2 Select the image to be transferred to the camcorder.  
When you click on the upper left corner (the cursor changes to the check mark ✓) of the image that you want to transfer in the "**ALBUM window**", a red circle will appear in the upper left corner of the image.  
Clicking it again erases the red circle. You can select 2 or more images this way. Select all the images if you wish to transfer all the still images to the camcorder.
- 3 Select "**Camera**"—"Transmit Selected Photo". Or click on the "**Send**" icon in the "**ALBUM window**". The selected image is transferred to the camcorder.

Camera	
Reload Stop	
Save All Save Selected Photo	⌘R
Transmit Selected Photo	⌘T
Delete All... Delete Selected Photo...	

### NOTE

Image transfer is unavailable if the camcorder memory becomes full and "**Camera memory is full. Picture transfer is aborted.**" is displayed while transferring images to it.

Use of this software is authorized according to the terms of the software license.

When contacting the nearest JVC office or agency in your country about this software (refer to the JVC Worldwide Service Network at <http://www.jvc-victor.co.jp/worldmap/index-e.html>), please fill out the following and have the appropriate information ready.

Product Name		
Model		
Problem		
Error Message		
PC	Manufacturer	
	Model	<input type="checkbox"/> Desktop <input type="checkbox"/> Laptop
	CPU	
	OS	
	Memory	MB
	Available Hard Disk Space	MB

Please note that it may take some time to respond to your questions, depending on their subject matter.

JVC cannot answer questions regarding basic operation of your PC, or questions regarding specifications or performance of the OS, other applications or drivers.

<b>A</b>	
Adding an album created using another application .....	☞ pg. 41
Advanced applications .....	☞ pg. 4
Album window .....	☞ pg. 32
<b>B</b>	
Bookshelf window .....	☞ pg. 29
<b>C</b>	
Camera window .....	☞ pg. 33
Changing system settings .....	☞ pg. 34
Changing the album's front cover ...	☞ pg. 40
Changing the comment .....	☞ pg. 40
Connectable devices .....	☞ pg. 27
Connections .....	☞ pg. 26
Connection preferences .....	☞ pg. 34
Create preview icon .....	☞ pg. 35
<b>D</b>	
Delete saved photos in camera after saving .....	☞ pg. 35
Deleting all the still images stored in the camcorder .....	☞ pg. 38
Display time (sec) .....	☞ pg. 36
<b>E</b>	
Edit preferences .....	☞ pg. 37
Editing and processing an image using another application .....	☞ pg. 42
Editor application .....	☞ pg. 37
<b>F</b>	
Fade in time (sec)/fade out time (sec) .....	☞ pg. 36
<b>G</b>	
Getting started .....	☞ pg. 27
<b>H</b>	
How the desktop works .....	☞ pg. 29
How to close the program .....	☞ pg. 28
<b>I</b>	
Installation .....	☞ pg. 28
<b>J</b>	
JPEG .....	☞ pg. 29
<b>M</b>	
Major features .....	☞ pg. 4
Menu bar .....	☞ pg. 29
Camera menu .....	☞ pg. 31
Edit menu .....	☞ pg. 30
File menu .....	☞ pg. 29
Help menu .....	☞ pg. 31
Slide Show menu .....	☞ pg. 31
View menu .....	☞ pg. 30
Window menu in Album window .....	☞ pg. 32
in Bookshelf window .....	☞ pg. 31
in Picture window .....	☞ pg. 33
Moving an image to another album .....	☞ pg. 41
<b>O</b>	
Opening an image stored on your hard drive .....	☞ pg. 39
Operating environment .....	☞ pg. 27
<b>P</b>	
PICT .....	☞ pg. 29
Picture window .....	☞ pg. 33
Port .....	☞ pg. 34
Provided accessories .....	☞ pg. 4
<b>R</b>	
Random order .....	☞ pg. 36
Readme.TXT .....	☞ pg. 25
Rotating an image .....	☞ pg. 39
<b>S</b>	
Save preferences .....	☞ pg. 35
Saving an image on your hard drive .....	☞ pg. 38
Slide show preferences .....	☞ pg. 36
Speed .....	☞ pg. 34
Starting up Picture Navigator .....	☞ pg. 28
<b>T</b>	
Toolbar Album window toolbar .....	☞ pg. 32
Bookshelf window toolbar .....	☞ pg. 32
Camera window toolbar .....	☞ pg. 33
Picture window toolbar .....	☞ pg. 33
Transferring an image from camcorder to PC .....	☞ pg. 38
Transferring an image from PC to camcorder .....	☞ pg. 43
<b>W</b>	
What is Picture Navigator software ..	☞ pg. 4
WWW server .....	☞ pg. 25
<b>Z</b>	
Zooming in or out of an image .....	☞ pg. 39





**EN**

**Picture Navigator**

**JVC**

**JVC COMPANY OF AMERICA**

DIVISION OF US JVC CORP.

41 Slater Drive, Elmwood Park, N.J. 07407

**JVC CANADA INC.**

21 Finchdene Square, Scarborough Ontario M1X 1A7